

Aspiring Foundations federated Nursery Schools

SAFEGUARDING AND CHILD PROTECTION POLICY 2017-18

SCHOOL DETAILS

Head teacher:	Amanda Brown
Senior Designated Person:	Amanda Brown
Deputy Designated Person/s:	Maraide Hurst / Suzanne Elson
Designated Governor for Safeguarding:	Tammy Vickery
Chair of Governors:	Claire Lomax
Policy Date:	Jan '18
Policy Status:	Statutory
Policy Review Cycle:	Annual
Next Review Date:	Sept '18

CONTENTS

1	Introduction	Page 2 – 4
2	Definitions	Page 4 – 6
3	Accountability	Page 6 – 8
4	Role and Responsibilities of Staff	Page 8
5	Role and Responsibilities of Senior Designated Person	Page 8 – 10
6	Role and Responsibilities of Governing Body and Designated Governor	Page 10
7	Early Intervention / Common Assessment Framework	Page 10 - 11
8	Procedures regarding safeguarding concerns	Page 11 – 12
9	Process to follow if a child makes a disclosure	Page 12-13
10	Confidentiality	Page 13
11	Recording, Maintenance and Transfer of Records	Page 13-14
12	Allegations Management	Page 14 – 15
13	Whistleblowing	Page 15
14	Proactive Safeguarding	Page 15-16
15	Disqualification by Association	Page 16-17
16	Safeguarding Children who are Vulnerable to Extremism	Page 17-18

<i>Appendices</i>		
1	Cause for Concern Form	Page 19
2	Front Sheet for Child Protection Files	Page 20
3	Signs and indicators of abuse	Page 21 – 34
4	Halton Levels of Need	Page 35
5	Referral Flowchart	Page 36

**Aspiring Foundations Federated Nursery Schools
SAFEGUARDING AND CHILD PROTECTION POLICY 2017-18**

1.0 INTRODUCTION

- 1.1 *Aspiring Foundations Federated Nursery Schools* fully recognise its duty toward safeguarding and promoting the welfare of children under Section 175 of the Education Act 2002.
- 1.2 The Governing body takes seriously its responsibility under section 175 of the Education Act 2002 to safeguard and promote the welfare of children; and to work together with other agencies to ensure adequate arrangements within our school to identify, assess, and support those children who are suffering, or likely to suffer, harm.
- 1.3 The aim of this policy is to establish a “whole School” approach to Safeguarding Children, in order to:
- Protect children from maltreatment;
 - Prevent impairment of children’s health or development;
 - Ensure that children are growing up in circumstances consistent with the provision of safe and effective care undertaking; and
 - Taking action to enable all children to have the best life chances
- 1.4 *Aspiring Foundations Federated Nursery Schools* will prevent abuse and neglect by ensuring that the ethos and atmosphere of the schools is conducive to a safe environment. Pupils and parents/carers will feel supported and able to report safeguarding concerns to any member of staff. Staff will feel they are supported by colleagues and senior management team, including the governing body, and are able to report and seek advice and guidance on any safeguarding concerns.
- 1.5 Safeguarding children and young people will be reflected throughout the curriculum.
- 1.6 As part of our safeguarding ethos, *Aspiring Foundations Federated Nursery Schools* encourage pupils to respect the fundamental British values of democracy, the rule of law, individual liberty and mutual respect and tolerance of those with different faiths and beliefs. *Aspiring Foundations Federated Nursery Schools* ensure that partisan political views are not promoted in the teaching of any subject in the school and where political issues are brought to the attention of the pupils, reasonably practicable steps will be taken to offer a balanced presentation of opposing views to pupils. Further information regarding this is contained in Section 16.
- 1.7 *Aspiring Foundations Federated Nursery Schools* will protect children at risk of abuse and neglect by having Safeguarding Procedures in place that reflect current legislation, guidance and best practice.
- 1.8 The Federation also ensure that safer recruitment practices are followed when recruiting staff at all levels across the schools, including volunteers. Induction and continuous staff training on safeguarding children relevant to role and responsibilities is also provided.
- 1.9 The School will make key decisions regarding information sharing in line with guidance and data protection and will always seek to gain parent’s consent, but will always consider the paramountcy principle (Section 1 of the Children Act 1989) whereby the child’s needs are paramount.

**Aspiring Foundations Federated Nursery Schools
SAFEGUARDING AND CHILD PROTECTION POLICY 2017-18**

1.10 This policy has been developed in consultation with Halton Safeguarding Children Board in accordance with the principles established by:

- [Education Act 2002](#)
- [Children Act 1989](#)
- [Children Act 2004](#)
- [Safeguarding Vulnerable Groups Act 2006](#), as amended by the [Protection of Freedoms Act 2012](#)
- [Counter-Terrorism and Security Act 2015](#)
- [Childcare Act 2006; Childcare \(Disqualification\) Regulation 2009](#)
- [Children and Families Act 2014](#)
- [Children and Social Work Act 2017](#)

and with reference to the following key documents:

- [Keeping Children Safe in Education 2016](#)
- [Working Together to Safeguard Children 2015](#)
- [Prevent Duty Guidance 2015](#)
- [The Prevent Duty; Departmental advice for schools and childcare providers 2015](#)
- [What to do if you're worried a child is being abused: Advice for Practitioners 2015](#)
- [Information Sharing: Advice for Practitioners providing safeguarding services 2015](#)
- [UKCISS Sexting in Schools and Colleges; Responding to incidents and safeguarding young people](#)
- [Child sexual exploitation: Definition and a guide for practitioners, local leaders and decision makers working to protect children from child sexual exploitation](#)
- *Halton Safeguarding Children Board Pan-Cheshire Multi-Agency Safeguarding Children Procedures*
<http://www.proceduresonline.com/pancheshire/halton/index.html>

1.11 This policy should be viewed alongside the following School policies which have relevance to safeguarding and promoting the welfare of children:

- Whistleblowing Policy
- Staff Behaviour / Code of Conduct
- Allegations Management / Allegations Against Adults Policy
- Safer Recruitment and Retention Policy
- Behaviour / Rewards Policy
- Anti-Bullying Policy
- First Aid / Medications Policy
- Intimate Care Policy
- Drugs and Substance Misuse Policy
- E-Safety / Acceptable Use Policy
- Educational Visits Policy
- Health and Safety Policy
- Maintaining Children's Safety and Security on the Premises
- Children's Rights and Entitlements
- Disqualification by Association

**Aspiring Foundations Federated Nursery Schools
SAFEGUARDING AND CHILD PROTECTION POLICY 2017-18**

- 1.12 Safeguarding is everybody's responsibility and, as such, this policy applies to all staff and volunteers working in the School. An allegation, disclosure or suspicion of abuse, or an expression of concern about abuse, could be made to any member of staff, not just those with a teaching or welfare-related role. Similarly, any member of staff may observe or suspect an incident of abuse.
- 1.13 This policy applies to all staff (including paid staff and volunteers, permanent / temporary / ancillary / supply contracts), governors and students on placement.
- 1.14 This policy replaces *Safeguarding and Child Protection Policy Sept '17* and is reviewed on an annual basis.

2.0 DEFINITIONS

2.1 Child

A child is anyone who has not yet reached their 18th birthday.

2.2 Abuse

Abuse and neglect are forms of maltreatment of a child. Somebody may abuse or neglect a child by inflicting harm, or by failing to act to prevent harm. Children may be abused in a family or in an institutional or community setting, by those known to them or, more rarely, by a stranger for example, via the internet. They may be abused by an adult or adults, or another child or children.

2.3 Physical Abuse

Physical abuse may involve hitting, shaking, throwing, poisoning, burning or scalding, drowning, suffocating, or otherwise causing physical harm to a child. Physical harm may also be caused when a parent or carer fabricates the symptoms of, or deliberately induces, illness in a child.

2.4 Emotional Abuse

Emotional abuse is the **persistent** emotional maltreatment of a child such as to cause severe and persistent adverse effects on the child's emotional development. It may involve:

- conveying to children that they are worthless or unloved, inadequate, or valued only insofar as they meet the needs of another person
- not giving the child opportunities to express their views, deliberately silencing them or 'making fun' of what they say or how they communicate.
- age or developmentally inappropriate expectations being imposed on children. These may include interactions that are beyond the child's developmental capability, as well as overprotection and limitation of exploration and learning or preventing the child participating in normal social interaction
- causing children to see or hear the ill-treatment of another
- serious bullying(including cyber bullying)
- causing children frequently to feel frightened or in danger

**Aspiring Foundations Federated Nursery Schools
SAFEGUARDING AND CHILD PROTECTION POLICY 2017-18**

- the exploitation or corruption of children

Some level of emotional abuse is involved in all types of maltreatment of a child, though it may occur alone.

2.5 Neglect

Neglect is the persistent failure to meet a child's basic physical and psychological needs, likely to result in the serious impairment of the child's health or development. Neglect may occur during pregnancy as a result of maternal substance abuse. Once a child is born neglect may involve a parent or carer failing to:

- provide adequate food, shelter (including exclusion from home or abandonment)
- protect a child from physical and emotional harm or danger
- ensure adequate supervision (including the use of inadequate care-givers); or
- ensure access to appropriate medical care or treatment

It may also include neglect of, or unresponsiveness to, a child's basic emotional needs.

2.6 Sexual Abuse

Involves forcing or enticing a child or young person to take part in sexual activities, not necessarily involving a high level of violence, whether or not the child is aware of what is happening. The activities may involve physical contact, including assault by penetration (for example, rape or oral sex) or non-penetrative acts such as masturbation, kissing, rubbing and touching outside of clothing. They may also include non-contact activities, such as involving children in looking at, or in the production of, sexual images, watching sexual activities, encouraging children to behave in sexually inappropriate ways, or grooming a child in preparation for abuse (including via the internet). Sexual abuse is not solely perpetrated by adult males. Women can also commit acts of sexual abuse, as can other children.

2.6.1 Child Sexual Exploitation (CSE) is also sexual abuse of a child. The definition of Child Sexual Exploitation is:

2.6.2 Child sexual exploitation is a form of child sexual abuse. It occurs where an individual or group takes advantage of an imbalance of power to coerce, manipulate or deceive a child or young person under the age of 18 into sexual activity (a) in exchange for something the victim needs or wants, and/or (b) for the financial advantage or increased status of the perpetrator or facilitator. The victim may have been sexually exploited even if the sexual activity appears consensual. Child sexual exploitation does not always involve physical contact; it can also occur through the use of technology.

2.6.3 Like all forms of child sexual abuse, child sexual exploitation:

- can affect any child or young person (male or female) under the age of 18 years, including 16 and 17 year olds who can legally consent to have sex;
- can still be abuse even if the sexual activity appears consensual;
- can include both contact (penetrative and non-penetrative acts) and non-contact sexual activity;
- can take place in person or via technology, or a combination of both;
- can involve force and/or enticement-based methods of compliance and may, or may not, be accompanied by violence or threats of violence;

**Aspiring Foundations Federated Nursery Schools
SAFEGUARDING AND CHILD PROTECTION POLICY 2017-18**

- may occur without the child or young person's immediate knowledge (through others copying videos or images they have created and posting on social media, for example);
- can be perpetrated by individuals or groups, males or females, and children or adults. The abuse can be a one-off occurrence or a series of incidents over time, and range from opportunistic to complex organised abuse; and
- is typified by some form of power imbalance in favour of those perpetrating the abuse. Whilst age may be the most obvious, this power imbalance can also be due to a range of other factors including gender, sexual identity, cognitive ability, physical strength, status, and access to economic or other resources.

2.6.4 *Aspiring Foundations Federated Nursery Schools* follow the Pan-Cheshire CSE Protocol (available from the HSCB website) and acknowledge that preventing sexual abuse in the form of CSE forms part of the Halton Safeguarding Children Board priorities. Where there are concerns about possible CSE, *Aspiring Foundations Federated Nursery Schools* will complete a CSE Screening Tool and submit the completed tool to Halton iCART.

2.7 Signs and Indicators of Abuse

2.8 Further information regarding the signs and indicators of abuse can be found in Appendix 3.

2.8.1 Included within Appendix 3 is information about and indicators of Child Sexual Exploitation, Sexting, Female Genital Mutilation, Forced Marriage, Honor Based Abuse, Peer on Peer abuse, Vulnerabilities to Extremism and Children Missing Education.

3.0 ACCOUNTABILITY

3.1 All staff, volunteers and governors working in the school, are responsible for the operation of this policy.

3.2 The Senior Designated Person for the Federation is:

*Amanda Brown, Executive Headteacher, 0151 424 4686,
head.warringtonroad@halton.gov.uk / head.dittonnurseryschool@halton.gov.uk*

In their absence, the Deputy Designated Persons are:

*Maraide Hurst, Assistant Head Warrington Road Nursery School, 0151 424 4686,
senco.warringtonroad@halton.gov.uk*

*Suzanne Elson, Assistant Head Ditton Nursery School, 0151 424 4687,
deputyhead.dittonnurseryschool@halton.gov.uk*

3.3 In addition, the Governing Body has a Designated Governor for Safeguarding. The Designated Governor for Safeguarding is:

*Tamasine Vickery, Chair of Resources Committee 07769110977,
tammy.vickery@tpmnow.co.uk*

3.4 All members of staff have a legal duty to report any disclosure, allegation or suspicion of abuse, to the Senior Designated Person or, in their absence, the Deputy Designated Person. This must be done immediately following the disclosure/suspicion is made/arises. A Cause for Concern form (Appendix 1) should also be completed, which is then held by the Senior Designated Person and will be placed in the child's confidential individual file.

**Aspiring Foundations Federated Nursery Schools
SAFEGUARDING AND CHILD PROTECTION POLICY 2017-18**

- 3.5 The Senior Designated Person has a duty to make a referral to Children's Social Care, whenever there is reason to suspect that a child is suffering, or likely to suffer, significant harm. Where a professional disagreement occurs between workers when working with children and families, the HSCB Escalation Policy should be referred to.
- 3.6 Parents will be informed of any referrals made to Children's Social Care and consent will be gained. Parents will not be contacted when this would put the child at increased risk of significant harm (e.g. in case of suspected Fabricated or Induced Illness, Sexual Abuse where a family member is the suspected perpetrator, or Forced Marriage). Any decision not to inform parents/carers should be recorded on the Children's Social Care referral form with the reasons for such a decision and a copy should be kept in the Child Protection File for that child.
- 3.7 The Senior / Deputy Designated Person may contact Children's Social Care for advice, if unsure as to whether a referral is appropriate.
- 3.8 The welfare of the child/children concerned, including the welfare of any other children who may be at risk, must always take precedence over confidentiality.
- 3.9 The Senior / Deputy Designated Person will make every effort to attend any meetings resulting from the safeguarding process to which the School is invited.
- 3.10 The Senior Designated Person will ensure that the school is represented by an appropriate member of staff should a Child Protection Conference be convened. The Senior Designated Person will ensure that this member of staff is fully briefed as to the expectations regarding attending conference, including the decision making requirement. Reports using the agreed Local Authority Conference template will always be submitted to Conference in advance and shared with parents prior to the Conference.
- 3.11 The Senior Designated Person is responsible for ensuring that any actions agreed at such meetings are progressed and followed up.
- 3.12 The Senior Designated Person and deputies must complete Level 3 safeguarding training relevant to their role, including Working Together to Safeguard Children. This level of training must be updated at least every two years, with further safeguarding training to be accessed on a minimum of an annual basis.
- 3.13 All staff working in the school must be given a copy of the Safeguarding / Child Protection policy immediately upon starting work at the school as part of their induction.
- 3.14 All staff working in the school must undergo full Level 2 Basic Awareness in Safeguarding training appropriate to their role as part of their induction and at a minimum of every three years thereafter. All staff will also receive further safeguarding update training on a minimum of an annual basis.
- 3.15 The Governing Body will undergo Safeguarding training specific to their role and responsibilities at a minimum of every three years. The Designated Governor for Safeguarding will attend appropriate Roles and Responsibilities training at least every two years.

**Aspiring Foundations Federated Nursery Schools
SAFEGUARDING AND CHILD PROTECTION POLICY 2017-18**

- 3.16 A summary of safeguarding cases and pertinent safeguarding issues that have been dealt with by the school will be reported to the Board of Governors on at least an annual basis, with good practice being on a termly basis. All reporting to the Board of Governors will be anonymised.
- 3.17 The Board of Governors shall be responsible for ensuring that the school has up to date policies in place with respect to Safeguarding Children, which include procedures for handling allegations against adults working with children whether in a paid or voluntary capacity.
- 3.18 The Board of Governors will ensure that the school operates safer recruitment procedures including:
- at least one member of every recruitment panel having completed approved Safer Recruitment training
 - appropriate DBS checks completed for staff (including Barred List checks and teacher prohibition checks where appropriate)
 - appropriate checks made regarding staff whose duties fall within the Childcare (Disqualification) Regulation 2009
 - the maintenance of an accurate Single Central Record

4.0 ROLES & RESPONSIBILITIES OF STAFF

- 4.1 Through regular contact with children, all staff across the school community are well placed to identify concerns and have individual responsibility for reporting such concerns to the Senior / Deputy Designated Person.
- 4.2 Staff will ensure that they are able to recognise possible indicators of abuse and neglect (see Appendix 3 for further information) and know who to report their concerns to.
- 4.3 Staff will report any safeguarding concerns to the Senior Designated Person without delay and in a timely fashion. Verbal reporting of concerns will then be followed up in writing as soon as possible always but within 24 hours.
- 4.4 Staff will ensure that they record their concerns using the school's standard recording format (Appendix 1) in a contemporaneous fashion, clearly noting the difference between fact and opinion and where the information has come from.
- 4.5 Staff will ensure that concerns relating to a child remain confidential and are only shared with the Senior / Deputy Designated Person.
- 4.6 Staff will co-operate with safeguarding enquiries made by Children's Social Care in relation to our pupils.
- 4.7 Staff will develop effective links with other agencies in the interests of child welfare.

**Aspiring Foundations Federated Nursery Schools
SAFEGUARDING AND CHILD PROTECTION POLICY 2017-18**

4.8 Staff will ensure that they attend full Level 2 Basic Awareness in Safeguarding training appropriate to their role at least every three years and will attend further update training annually. This includes ensuring attendance at WRAP training regarding the Prevent Duty.

4.9 Staff will ensure that they are familiar with and understand all school safeguarding related policies and procedures.

5.0 ROLES & RESPONSIBILITIES OF SENIOR DESIGNATED PERSON

5.1 The Senior Designated Person (SDP) will be a member of the Senior Leadership team and the role will be explicit within their job description. He / she will undertake the following as part of the role:

- Provide support, advice and guidance to colleagues
- Recognise signs / indicators of abuse and decide when referrals to Children's Social Care / other relevant agencies are appropriate. This should include identification of cases where Early Intervention would be appropriate
- Liaise with relevant agencies (where appropriate) to inform the decision on whether to make a referral to Children's Social Care
- Liaise with Head teacher (where the role is not carried out by the Head teacher) to inform him / her of any issues or on-going investigations. Ensure there is always cover for the SDP role by having a named deputy or team of deputies
- Lead a team of Deputy Designated Persons if the establishment is large enough to require this (including providing effective support and supervision to these colleagues)
- Attend and effectively contribute to Child in Need, Child Protection Conference, Core Groups, CAF meetings and any other meetings requested by other agencies
- Provide written reports at such meetings using the Local Authority report template
- Ensure that school is always represented at Child Protection Conferences (including cover during school holiday times) and ensure that a written report is always submitted. The details of this report will be shared with the family prior to conference.
- Keep detailed, accurate and secure written records of referrals and concerns. Ensure these records are stored in a locked filing cabinet and are not accessible by staff / students
- Monitor and track the progress of all vulnerable students (including those who are subject to Children's Social Care intervention)
- Provide the Governing Body with an up to date analysis of safeguarding related issues and numbers of vulnerable students to enable them to scrutinise, challenge and support school as necessary
- Ensure the School's child protection and safeguarding related policies are up to date and reviewed annually. Work with the Governing Body / Designated Governor regarding this
- Complete the Section 175/157 Audit as requested by the Local Safeguarding Children Board. Work with the Head teacher and Designated Governor regarding this
- Ensure every member of staff has access to and understands the school's child protection and safeguarding related policies (including whistleblowing, etc.)
- Ensure that parents have access to and have seen the Safeguarding/Child Protection policy which alerts them to the fact that referrals may be made and the role of the school to avoid possible future conflict

**Aspiring Foundations Federated Nursery Schools
SAFEGUARDING AND CHILD PROTECTION POLICY 2017-18**

- Ensure pupils are aware of the Safeguarding/Child Protection policy (providing a “child friendly” version of policy)
- Ensure that the most up to date version of the Safeguarding/Child Protection Policy is available to download from the school website and that appropriate safeguarding information is displayed to website visitors
- Ensure all staff (including ITT students) have induction training which covers child protection / safeguarding and are able to recognise and report any concerns immediately when they arise, including the fact that there is also the possibility of peer on peer abuse
- Ensure that all staff have full Level 2 Basic Awareness in Safeguarding training at least once every three years, and ensure that all staff receive safeguarding update training on a minimum of an annual basis. Keep accurate records of staff participation in this
- Ensure that all staff have completed WRAP Level 3 training in relation to their Prevent Duty
- Ensure all staff are aware of and adhere to the school’s Code of Conduct. Ensure that this Code of Conduct includes references to online conduct and e-safety and is reviewed on an annual basis
- Attend Level 3 multi-agency Working Together training, and subsequent Refresher training every 2 years
- Continually update safeguarding knowledge by attending appropriate Level 3 multi-agency safeguarding training on a minimum of an annual basis
- When young people leave the establishment, ensure their child protection file is copied and transferred to the new setting (within 15 school days where possible), but separately to the main school file, as per the “*Halton Protocol for the Transfer of Child Protection Records between Education Settings*”.
- Ensure that the school has a suitably trained “Key Adult/s” in order to fulfil its obligations under Operation Encompass
- Ensure that the school’s commitment to Operation Encompass is known throughout the school community via the means of staff training, parental letters, posters and the school website
- Ensure safe messages are displayed in reception / visitor areas and that appropriate checks are made on entry to the school. Ensure visitors to the establishment are aware of who the SDP/DDP is and how to share concerns should they arise
- Share and disseminate good practice within own school and within the local area

6.0 ROLES & RESPONSIBILITIES OF GOVERNING BODY AND DESIGNATED GOVERNOR

- 6.1 Governing bodies are responsible for ensuring the school’s policies and procedures for child protection meet statutory requirements as is set out in *Keeping Children Safe in Education 2016*. All governors have a responsibility to ensure the school’s safeguarding measures meet statutory requirements and all should know what to do if they have concerns about a child.
- 6.2 The Senior Designated Person should liaise with the Designated Governor for Safeguarding so that the Designated Governor can report to the governing body about safeguarding issues. Reports to the governing body should not be about specific child protection cases, but should review the safeguarding policies and procedures. It is good practice for the Designated Governor and the Senior Designated Person to present the report together.

**Aspiring Foundations Federated Nursery Schools
SAFEGUARDING AND CHILD PROTECTION POLICY 2017-18**

7.0 EARLY INTERVENTION / COMMON ASSESSMENT FRAMEWORK

- 7.1 *Aspiring Foundations Federated Nursery Schools* recognise that some children need early help and support services and is committed to the early identification of such needs.
- 7.2 The recognised method of providing early intervention in Halton is the multi-agency Common Assessment Framework (CAF) process. CAF is a four-step process whereby staff can identify a child's needs early, assess those needs holistically, deliver coordinated services and review progress. The CAF is designed to be used when:
- A member of staff is worried about how well a child is progressing (e.g. concerns about their health, development, welfare, behaviour, progress in learning or any other aspect of their wellbeing)
 - A child or their parent/carer, raises a concern with a member of staff
 - A child's needs are unclear, or broader than the member of staff's service can address
- 7.3 In order to best support children and families, *Aspiring Foundations Federated Nursery Schools* will participate fully in the Early Intervention/CAF process and will take on the role of Lead Professional where appropriate. To support this, *Aspiring Foundations Federated Nursery Schools* will ensure that a member of staff is fully trained to use eCAF.
- 7.4 The CAF process is entirely voluntary and informed consent of parents or young person, where they are able to provide consent, is mandatory. *Aspiring Foundations Federated Nursery Schools* recognises that should a family not provide consent, this may require a review of the Level of Need as refusal to provide consent may increase the risk to the child and subsequent consultation with iCART (Integrated Contact and Referral Team) would be required.
- 7.5 The Early Intervention Locality Teams in Halton develop and maintain strong links to universal services, offer named link workers to key services, offer direct family support and offer support, advice and guidance to professionals. The locality teams are located in Widnes and Runcorn.
- 7.6 Contact should be made with a worker located within the Children's Social Care iCART for advice and support around the CAF process and for help to identify the most appropriate support services for a family's identified needs. **The contact number is 0151 907 8305.**

8.0 PROCEDURES REGARDING SAFEGUARDING CONCERNS

- 8.1 All members of the school community have a statutory duty to safeguard and promote the welfare of children and young people. If any member of the school community has a safeguarding concern regarding a child, they should contact the Senior Designated Person without delay. Staff and governors should not investigate possible abuse or neglect themselves.
- 8.2 Injuries noted should be reported to the Senior Designated Person immediately and without delay as it is acknowledged that once an injury occurs, the body will start to heal and therefore evidence will start to diminish.

**Aspiring Foundations Federated Nursery Schools
SAFEGUARDING AND CHILD PROTECTION POLICY 2017-18**

- 8.3 The Senior Designated Person will consider the information they have received and will determine what action should be taken by the school. He/she will refer to the Halton Levels of Need framework to aid this decision making (see Appendix 4). He/she must record the outcome of this decision making process.
- 8.4 If the Senior Designated Person is unsure as to whether the presenting concern reaches the threshold for referral to Children's Social Care they should contact the Integrated Contact and Referral Team (iCART) for advice (See Appendix 4 for the referral flowchart).
- 8.5 Children's Social Care contact details are as follows:
- **iCART, 9am-5pm Mon-Thurs (9am-4.30pm Fridays): 0151 907 8305**
 - **Out of hours Emergency Duty Team (EDT): 0345 050 0148**
- 8.6 If the Senior Designated Person feels that the concern should be addressed via the Common Assessment Framework (CAF) or Children in Need processes, then they should contact the child's parent(s) to request consent to proceed. If the parent(s) refuses to give consent, the Senior Designated Person should consider how to proceed, including if refusal increases the risk of harm to the child.
- 8.7 Where the Senior Designated Person feels that the information indicates that a child is in need of protection, they should still contact the parent(s) to inform them that they are making a referral to Children's Social Care, unless to do so would place the child at increased risk of harm; for example:
- where sexual abuse involving a family member is suspected or disclosed
 - where fabricated or induced illness is suspected
 - where to do so would impede an existing criminal investigation
- 8.8 All referrals must be followed up in writing within a maximum of 48 hours but sooner where possible or when requested, using the Children's Social Care Referral Form (available on the Halton Safeguarding Children Board website www.haltonsafeguarding.co.uk). If the school does not receive a response of the outcome to the referral from Children's Social Care within one working day, the Senior Designated Person should contact iCART immediately.

9.0 PROCESS TO FOLLOW IF A CHILD MAKES A DISCLOSURE

- 9.1 If a child makes a disclosure of abuse to you:

You should:

- Listen and keep calm. Do not interrupt
- You **MUST NOT** promise the child that you will keep the matter confidential. Explain to the child who you will need to tell and why
- Observe visible bruises and marks, but do not ask a child to remove or adjust their clothing to observe them
- Keep questions to a minimum as your role is not to investigate. If you need to ask questions in order to ascertain whether this is a safeguarding concern, ensure they are open questions

**Aspiring Foundations Federated Nursery Schools
SAFEGUARDING AND CHILD PROTECTION POLICY 2017-18**

- Use the “TED” model for asking open ended questions: “Tell me about that”, “Explain that to me”, “Describe that”
- Make a record of what has been said immediately afterwards in words used by the child and yourself to the best of your memory. Use capital letters for the child’s words to help distinguish between the two.
- Note anything about the child which is connected i.e. any visible injuries including the position and description, the demeanour of the child i.e. crying, withdrawn etc.
- Clearly indicate whether fact, opinion or third party information
- Report the matter immediately to the Senior Designated Person
- If in doubt seek advice from the Senior Designated Person

You should not:

- Ask leading questions, put words into the child’s mouth or press for details
- Rush the child
- Examine the child
- Investigate
- Promise confidentiality
- Summarise or use your own words to describe events
- Delay sharing the information with the Senior Designated Person

10.0 CONFIDENTIALITY

10.1 *Aspiring Foundations Federated Nursery Schools* recognises that all matters relating to child protection are confidential.

10.2 The Head teacher or Senior / Deputy Designated Persons will disclose any information about a child to other members of staff on a need to know basis only. Guidance about sharing information can be found in the 2015 document [“Information Sharing: Advice for Practitioners providing safeguarding services 2015”](#)

10.3 All staff must be aware that they have a professional responsibility to share information with other agencies in order to safeguard children.

10.4 All staff must be aware that they cannot promise confidentiality to a child which might result in the child’s safety or wellbeing being compromised.

10.5 *Aspiring Foundations Federated Nursery Schools* will always share our intention to refer a child to Children’s Social Care with their parents /carers unless to do so could put the child at greater risk of harm, or impede a criminal investigation.

10.6 *Aspiring Foundations Federated Nursery Schools* recognises that children’s welfare is our paramount concern and therefore will use the paramountcy principle (Section 1 of the Children Act 1989) in order to inform some decisions regarding information sharing.

11.0 RECORDING, MAINTENANCE & TRANSFER OF RECORDS

11.1 All safeguarding concerns should be recorded on the Cause for Concern Form (Appendix 1). Staff making records will ensure that they clearly distinguish between fact and opinion and

**Aspiring Foundations Federated Nursery Schools
SAFEGUARDING AND CHILD PROTECTION POLICY 2017-18**

whether the information is 1st or 2nd hand. Records will clearly evidence the voice of the child and will always be written contemporaneously.

- 11.2 Records will be maintained by the Senior / Deputy Designated Person in a Child Protection File separate to the child's main pupil file. (See Appendix 2 for exemplar front sheet for Child Protection File.)
- 11.3 Individual files should be clearly organised in chronological order and all entries should be signed and dated in a legible manner by the person making the entry. This should include their role/designation at the school. There should be a chronology of events kept on file to enable the Senior or Deputy Designated Person to have an immediate overview of the case.
- 11.4 Such records will be kept in a secure locked *cupboard*. The Senior Designated Person and their Deputy will keep the keys.
- 11.5 Files will be archived and securely stored until the child's 25th birthday.
- 11.6 When/if a child transfers between schools / settings the Senior Designated Person will be responsible for transferring the child's Child Protection File to the new school / setting. The Senior Designated Person will follow the "*Halton Protocol for the Transfer of Child Protection Records between Education Settings*". The Senior Designated Person will speak to their counterpart in the school / setting to which the child is transferring in order to ensure that they are aware that the file is to be transferred. The file should be copied and transferred as soon as possible (within 15 schools days), but separately to the main school file. The file should be signed upon receipt, and delivered by hand wherever possible. A copy of the original file will be kept in school until the child's 25th birthday and will then be securely disposed of.

12.0 ALLEGATIONS MANAGEMENT

- 12.1 All school staff will be aware of and work within the school's statutory Code of Conduct 2017 and other relevant policies and procedures. The Code of Conduct includes guidance for staff regarding the school expectations of the use of mobile phones, electronic equipment and social media.
- 12.2 Where allegations against a staff member are made, the Head teacher will be notified immediately. In the event that the Headteacher is not available, or the allegation concerns them, the Chair of Governors should be contacted. No other members of staff will be asked to manage an allegation about another professional.
- 12.3 Halton Safeguarding Children Board's LADO procedures (available from www.haltonsafeguarding.co.uk) should be followed in all cases where it is alleged that a member of staff has:
- Behaved in a way that has harmed, or may have harmed a child.
 - Possibly committed a criminal offence against, or related to, a child
 - Behaved towards a child or children in a way that indicates he or she would pose a risk of harm

**Aspiring Foundations Federated Nursery Schools
SAFEGUARDING AND CHILD PROTECTION POLICY 2017-18**

- 12.4 Responding to the allegation in a timely and fair manner is essential. *Aspiring Foundations Federated Nursery Schools* will consider what immediate actions are required to reduce any risk to children within the school. This may include the staff member being moved to a position in the school where they have no contact with children, or could include that the person is suspended from duty whilst an investigation is undertaken.
- 12.5 Contact should be made with the Local Authority Designated Officer (LADO) in Halton within 24 hours of receiving the allegation. LADO will request that school complete a Consultation Form (available from the Halton Safeguarding Children Board website) in order to provide advice and guidance regarding the matter. LADO will, where appropriate, arrange for a Strategy Meeting to be undertaken. In the event that the named LADO is not available the school should request to speak with a duty LADO within the Safeguarding Unit. **The contact details for the LADO in Halton are 0151 511 7229, safeguarding.unit@halton.gcsx.gov.uk.**
- 12.6 **Please note:** *Working Together 2015* now refers to the LADO as the “Designated Offer”, but in line with the North West area, the title in Halton remains Local Authority Designated Officer.
- 12.7 The Head teacher should record as much detail as possible about the initial disclosure but should not take statements from children or employees or investigate the matter further until a consultation has taken place with LADO.
- 12.8 *Aspiring Foundations Federated Nursery Schools* will ensure that the staff member is made aware that an allegation has been made, but will not provide the individual with any further details initially. The member of staff should be advised of the procedures regarding allegations and *Aspiring Foundations Federated Nursery Schools* will ensure that the member of staff has access to appropriate support.
- 12.9 As a result of an investigation either through the LADO process or via internal disciplinary procedures, if any member of staff is found not suitable to work with children *Aspiring Foundations Federated Nursery Schools* will refer the individual to the Disclosure and Barring Service (DBS) for consideration for barring. This includes where the member of staff resigns prior to conclusion of the investigation, the member of staff is dismissed, or when the school ceases to use their service as a result of a substantiated allegation. Where appropriate, consideration will also be given to referral to the National College for Teaching and Learning for possible prohibition from teaching.
- 12.10 *Aspiring Foundations Federated Nursery Schools* will not use “compromise / settlement agreements” if the member of staff is not suitable to continue in their employment with children.

13.0 WHISTLEBLOWING

- 13.1 *Aspiring Foundations Federated Nursery Schools* recognises that children cannot be expected to raise concerns in an environment where staff fail to do so.
- 13.2 All staff should be aware of their duty to raise concerns, where they exist, which may include the attitude or actions of colleagues. The school’s Whistleblowing Policy is there to support and aid them in these circumstances.

**Aspiring Foundations Federated Nursery Schools
SAFEGUARDING AND CHILD PROTECTION POLICY 2017-18**

13.3 Whistleblowing regarding the Head teacher should be made to the Chair of the Governing Body, whose contact details should be readily available to staff.

14.0 PROACTIVE SAFEGUARDING

14.1 *Aspiring Foundations Federated Nursery Schools* recognises that the school plays a significant part in the prevention of harm to our children by providing them with opportunities to learn, good lines of communication with trusted adults, supportive peers and an ethos of protection.

14.2 *Aspiring Foundations Federated Nursery Schools* recognises that school may provide the only stability in the lives of children who have been abused or who are at risk of harm.

14.3 The school community will:

- Work to establish and maintain an ethos where children feel secure and are encouraged to talk and are always listened to
- Promote a caring, safe and positive environment within the school
- Encourage self-esteem and self-assertiveness through the curriculum as well as through personal relationships, whilst not condoning aggression or bullying
- Include regular consultation with children e.g. via key person time
- Ensure that all children know there is an adult, usually their key person, whom they can approach if they are worried or in difficulty
- Include safeguarding across the curriculum, including PSHE, to ensure that the children are equipped with the skills they need to stay safe from harm and to know to whom they should turn for help. In particular this will include anti-bullying work, e-safety, road safety, pedestrian and cycle training.
- Offer a positive school experience
- Ensure all staff are aware of school guidance for their use of mobile technology and have discussed safeguarding issues around the use of mobile technologies and their associated risks

15.0 DISQUALIFICATION BY ASSOCIATION

6.4 In April 2014 the Department for Education published “Keeping Children Safe in Education” which sets out what schools and colleges must do to safeguard and promote the welfare of children and young people under the age of 18. Under additional guidance recently published by the Department for Education, schools have been informed that they must undertake an additional safeguarding check on current and future staff to ensure that no one who is disqualified is employed in connection with:

Early Years provision (including education or any supervised activity outside of school hours) or:

☐ Later years childcare outside of school hours for children who have reached 5 years but have not yet reached 8 years, which includes before and after school care

The disqualification criteria includes:

1. Caution or conviction for certain criminal offences
2. Certain grounds relating to the care of children (e.g. supervision order or care order)

**Aspiring Foundations Federated Nursery Schools
SAFEGUARDING AND CHILD PROTECTION POLICY 2017-18**

3. Having registration refused or cancelled in relation to childcare, children's homes or disqualification from private fostering
4. Living in the same household where another person who is disqualified lives or works

The full list of relevant offences, orders and determinations can be located in tables 2-5 of the Compliance, Investigation and Enforcement handbook, section 5.1 "Disqualification" which can be accessed using this link:

<https://www.gov.uk/government/publications/compliance-investigation-and-enforcement-handbook-childcare>.

This check is separate from a DBS check. Any of the above criteria disqualify staff from providing this childcare and this includes "disqualification by association" (i.e. if someone in the same household is disqualified). Staff who either have a relevant offence / order or have someone living or working in their home who has a relevant offence must immediately apply to Ofsted to request a waiver in order to allow them to continue to work in these areas.

Please see 'Disqualification by Association Policy'

15.0 SAFEGUARDING PUPILS WHO ARE VULNERABLE TO EXTREMISM

- 15.1 Since 2010, when the Government published the Prevent Strategy, there has been an awareness of the specific need to safeguard children, young people and families from violent extremism. There have been several occasions both locally and nationally in which extremist groups have attempted to radicalise vulnerable children and young people to hold extreme views including views justifying political, religious, sexist or racist violence, or to steer them into a rigid and narrow ideology that is intolerant of diversity and leaves them vulnerable to future radicalisation.
- 15.2 *Aspiring Foundations Federated Nursery Schools* values freedom of speech and the expression of beliefs / ideology as fundamental rights underpinning our society's values. Both pupils and teachers have the right to speak freely and voice their opinions. However, freedom comes with responsibility and free speech that is designed to manipulate the vulnerable or that leads to violence and harm of others goes against the moral principles in which freedom of speech is valued. Free speech is not an unqualified privilege; it is subject to laws and policies governing equality, human rights, community safety and community cohesion.
- 15.3 Under duties imposed within the Prevent Duty Guidance 2015 as part of the Counter-Terrorism and Security Act 2015, *Aspiring Foundations Federated Nursery Schools* will ensure that situations are suitably risk assessed, that they will work in partnership with other agencies, that all staff are suitably trained and have attended WRAP Level 3 training and that IT policies will ensure that children and young people are safe from terrorist and extremist material when accessing the internet in school.
- 15.4 The Federation Lead (Single Point for Contact) for Prevent is:
Amanda Brown, 0151 424 4686/4687, head.warringtonroad@halton.gov.uk / head.dittonnursery@halton.gov.uk

He/she will link with other relevant agencies (including the Police) to ensure that vulnerable people are appropriately supported and risk assessed, and that all staff and Governors have received WRAP (Workshop to Raise Awareness of Prevent) training to ensure they are able

**Aspiring Foundations Federated Nursery Schools
SAFEGUARDING AND CHILD PROTECTION POLICY 2017-18**

to recognise any concerns. The specific Roles and Responsibilities of this Single Point of Contact (SPOC) are defined in Appendix 3.

- 15.5 The current threat from terrorism in the United Kingdom may include the exploitation of vulnerable people, to involve them in terrorism or in activity in support of terrorism. The normalisation of extreme views may also make children and young people vulnerable to future manipulation and exploitation. *Aspiring Foundations Federated Nursery Schools* is clear that this exploitation and radicalisation should be viewed as a safeguarding concern.
- 15.6 Definitions of radicalisation and extremism, and indicators of vulnerability to radicalisation are contained in Appendix 3.
- 15.7 *Aspiring Foundations Federated Nursery Schools* seeks to protect children and young people against the messages of all violent extremism including, but not restricted to, those linked to Islamist ideology, or to Far Right / Neo Nazi / White Supremacist ideology, Irish Nationalist and Loyalist paramilitary groups, and extremist Animal Rights movements.
- 15.8 The Channel and Prevent contacts within Cheshire Constabulary are:

Prevent Coordinator	Amber Jones	Amber.Jones@cheshire.pnn.police.uk (temporary cover for Lynsay Mullin)
	Lynsay Mullin	lynsay.mullin@cheshire.pnn.police.uk prevent@cheshire.pnn.police.uk
Channel Coordinator	DC Lesley Price	lesley.price@cheshire.pnn.police.uk

Alternatively there are the following national contacts available:

Anti-Terrorist Hotline 0800 789 321
Text Phone Service 0800 032 4539
Web site <https://secure.met.police.uk/athotline/>

Appendix 1

CAUSE FOR CONCERN FORM

STUDENT DETAILS

NAME:			
DOB:		YEAR/Form:	SEN STATUS:
ADDRESS:			

STAFF DETAILS

STAFF NAME:			
Date of incident / report / disclosure:		Time:	
Location of incident / report / disclosure:			
Date / time record is being made:			

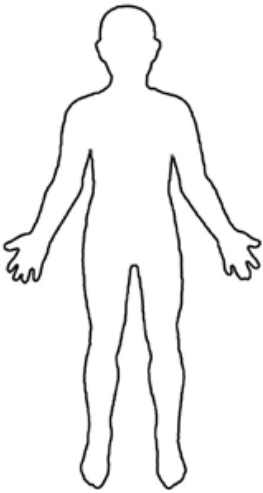
For any sections below continue recording overleaf if necessary, ensuring it is signed & dated

CONCERN DETAILS

NATURE OF CONCERN:

Provide details of the incident or concerns you have including times, dates, description of any injuries (use body diagram to indicate area of injury), witness details, what you have observed, heard or been told, if the information is first hand, fact or opinion, any other relevant details / information, etc. Ensure you clearly record the voice of the child's (suggestion - use capital letters to ensure it can be easily recognised). Ensure you act in a timely manner when reporting concerns, especially if there is an injury noted.

Please clearly sign and date the record at the end of your statement.



- Front
- Back

TO BE COMPLETED BY SENIOR DESIGNATED PERSON / DEPUTY DESIGNATED PERSON

AGREED ACTIONS & ANTICIPATED OUTCOMES:

Record all discussions, communications, referrals & decisions made. Include details of conversations with parents / other agencies & rationale behind key decision making. Clearly sign & date at the end of the record.

**Aspiring Foundations Federated Nursery Schools
SAFEGUARDING AND CHILD PROTECTION POLICY 2017-18**

SUMMARY SHEET

STUDENT DETAILS

NAME:		DOB:	
YEAR/FORM:		ETHNICITY:	
ADDRESS:			
PARENT / CARERS:			
PHONE NUMBERS:			
RELEVANT ADULTS IN SCHOOL:			

AGENCIES INVOLVED

AGENCY	NAMED PERSON	CONTACT DETAILS
CHILDREN'S SOCIAL CARE		
EARLY INTERVENTION		
CAF LEAD PROFESSIONAL		
EDUCATION WELFARE OFFICER		
SCHOOL HEALTH		
GP DETAILS		
FAMILY SUPPORT WORKER		
EDUCATION PSYCHOLOGIST		
POLICE		

BRIEF SUMMARY OF FACTS

Include details such as significant family members, family members who should not be contacted, sibling details (including their schools), etc.

Appendix 3

SIGNS AND INDICATORS OF ABUSE IN CHILDREN

The risk indicators described in this appendix are frequently found in cases of child abuse. Their presence is not proof that abuse has occurred, but:

- Must be regarded as indicators of the possibility of significant harm
- Justifies the need for careful assessment and discussion with Senior Designated Person
- May require consultation with and / or referral to Children's Services

However, it is important to note that the absence of such indicators does not mean that abuse or neglect has not occurred.

The following non-specific signs may indicate something is wrong:

- Significant change in behaviour / attendance at school
- Extreme anger or sadness
- Aggressive and attention-seeking behaviour
- Suspicious bruises / injuries with unsatisfactory explanations
- Lack of self-esteem
- Self-injury
- Depression
- Age inappropriate sexual behaviour

In an abusive situation the child may:

- Appear frightened of the parent/s or other adults or children
- Act in a way that is inappropriate to her/his age and development (though full account needs to be taken of different patterns of development and different ethnic groups)

The parent or carer may:

- Persistently avoid child health promotion services and treatment of the child's episodic illnesses
- Have unrealistic expectations of the child
- Frequently complain about/to the child and may fail to provide attention or praise (high criticism/low warmth environment)
- Be absent
- Be misusing substances (alcohol or drugs)
- Have mental health issues that compromise parenting ability
- Persistently refuse to allow access on home visits
- Be a victim or a perpetrator of domestic abuse

Staff should be aware of the potential risk to children when individuals, previously known or suspected to have abused children, move into the household. Staff should also be aware of the potential for peer on peer abuse.

RECOGNISING PHYSICAL ABUSE

Children will have accidental injuries. All injuries noted by staff should be responded to, regardless of whether the member of staff suspects it is an accidental injury. The following are often regarded as indicators of concern:

**Aspiring Foundations Federated Nursery Schools
SAFEGUARDING AND CHILD PROTECTION POLICY 2017-18**

- An explanation which is inconsistent with an injury
- Several different explanations provided for an injury
- Unexplained delay in seeking treatment
- The parents/carers are uninterested or undisturbed by an accident or injury
- Parents are absent without good reason when their child is presented for treatment
- Repeated presentation of minor injuries (which may represent a “cry for help” and if ignored could lead to a more serious injury)
- Family use of different doctors, urgent treatment centres (e.g. Walk-in centres) and A&E departments
- Reluctance to give information or mention previous injuries
- Absence from school (which may be used to hide injury from professionals)
- Depression and anxiety
- Aggression and violence
- Difficulties with relationships and socialising
- Trying to hide injuries (e.g. under clothing) – reluctance to get changed for PE
- Becoming distant or withdrawn
- Going missing from home
- Not wanting to go home from school

Injuries to children should always be addressed immediately in order to prevent evidence from disappearing. This is particularly pertinent in the case of visible slap / scratch marks.

Injuries caused by Physical Abuse

Bruising

- On the cheeks, ears, palms, arms and feet
- On the back, buttocks, tummy, hips and backs of legs
- Any bruising to a non-mobile child
- Multiple bruising in clusters, usually on the upper arms or outer thighs
- Bruises which look like they have been caused by fingers, a hand or an object (the outline of an object used e.g. belt marks, hand prints or a hair brush)
- Two simultaneous bruised eyes, without bruising to the forehead, (rarely accidental, though a single bruised eye can be accidental or abusive)
- Repeated or multiple bruising on the head or on sites unlikely to be injured accidentally
- Variation in colour possibly indicating injuries caused at different times

Burns and Scalds

- Burns on the backs of hands, feet, legs, genitals or buttocks
- Burns which have a clear shape, e.g. a cigarette burn or lineal burns
- Scalds that have a line indicating immersion or poured liquid (a child getting into hot water on his/her own accord will struggle to get out and cause splash marks)

Bite Marks

Bite marks can leave clear impressions of the teeth. Human bite marks are oval or crescent shaped. Those over 3 cm in diameter are more likely to have been caused by an adult or older child.

**Aspiring Foundations Federated Nursery Schools
SAFEGUARDING AND CHILD PROTECTION POLICY 2017-18**

Fractures

Fractures may cause pain, swelling and discolouration over a bone or joint. Non-mobile children rarely sustain fractures. There are grounds for concern if:

- The history provided is vague, non-existent or inconsistent with the fracture type
- There are associated old fractures
- Medical attention is sought after a period of delay when the fracture has caused symptoms such as swelling, pain or loss of movement
- There is an unexplained fracture in the first year of life

RECOGNISING EMOTIONAL ABUSE

Emotional abuse may be difficult to recognise, as the signs are usually behavioural rather than physical. The manifestations of emotional abuse might also indicate the presence of other kinds of abuse. The indicators of emotional abuse are often also associated with other forms of abuse. The following may be indicators of emotional abuse:

- Developmental delay – physical, emotional and mental
- Abnormal attachment between a child and parent/carer e.g. anxious, indiscriminate or non attachment
- Aggressive / violent behaviour
- Scape-goated within the family
- Problems with relationships and socialising
- Rebellious behaviour
- Low self-esteem and lack of confidence – can manifest as eating disorders or self-harming behaviours
- Withdrawn or seen as a “loner” – difficulty relating to others (self-isolating behaviour or negative impulsive behaviour)

RECOGNISING NEGLECT

Evidence of neglect is built up over a period of time and can cover different aspects of parenting. Indicators include:

- Failure by parents or carers to meet the basic essential needs e.g. adequate food, clothes, warmth, hygiene and medical care
- Poor supervision of child
- Poor hygiene (e.g. dirty or smelly)
- Unwashed / inadequate clothing
- Untreated health problems or frequent missed medical / dental appointments
- Frequent, untreated bouts of head lice
- A child seen to be listless, apathetic and irresponsive with no apparent medical cause
- Failure of child to grow within normal expected pattern, with accompanying weight loss
- Child thrives away from home environment
- Child frequently absent from school / poor punctuality
- Child left with adults who are intoxicated or violent
- Child abandoned or left alone for excessive periods
- Poor school attendance / punctuality

**Aspiring Foundations Federated Nursery Schools
SAFEGUARDING AND CHILD PROTECTION POLICY 2017-18**

- Withdrawn / isolated
- Problems with relationships and socialising

Within Halton the Graded Care Profile is used as the recognised tool for the assessment of neglect. Further information regarding this can be found on the Halton Safeguarding Children Board website.

RECOGNISING SIGNS OF SEXUAL ABUSE

Boys and girls of all ages may be sexually abused and are frequently scared to say anything due to guilt and/or fear. This is particularly difficult for a child to talk about and full account should be taken of the cultural sensitivities of any individual child/family. Recognition can be difficult, unless the child discloses and is believed. There may be no physical signs and indications are likely to be emotional/behavioural.

Indicators associated with this form of abuse are:

- Inappropriate sexualised conduct
- Sexually explicit behaviour, play or conversation, inappropriate to the child's age
- Continual and inappropriate or excessive masturbation
- Self-harm (including eating disorder), self-mutilation and suicide attempts
- Risk taking behaviour (during adolescence)
- Promiscuous behaviour
- Aggressive behaviour
- Withdrawn or isolated
- Unexplained gifts, toys or favours
- An anxious unwillingness to remove clothes e.g. for sports events (but this may be related to cultural norms or physical difficulties)
- Pain or itching of genital area
- Blood on underclothes
- Bed wetting or soiling
- Sleep problems
- Pregnancy in a younger girl where the identity of the father is not disclosed
- Physical symptoms such as injuries to the genital or anal area, bruising to buttocks, abdomen and thighs, sexually transmitted infections, presence of semen on vagina, anus, external genitalia or clothing

The Brook Sexual Behaviours Traffic Light Tool is available for professionals who work with children to help identify, assess and respond appropriately to sexual behaviours <http://www.brook.org.uk/our-work/category/sexual-behaviours-traffic-light-tool>

OTHER IMPORTANT AREAS TO NOTE:

RECOGNISING CHILD SEXUAL EXPLOITATION (part of Sexual Abuse)

The following list of indicators is not exhaustive or definitive but it does highlight common signs which can assist professionals in identifying children or young people who may be victims of sexual exploitation. Signs include:

- underage sexual activity
- inappropriate sexual or sexualised behaviour
- sexually risky behaviour, 'swapping' sex
- repeat sexually transmitted infections
- in girls, repeat pregnancy, abortions, miscarriage

**Aspiring Foundations Federated Nursery Schools
SAFEGUARDING AND CHILD PROTECTION POLICY 2017-18**

- receiving unexplained gifts, or gifts from unknown sources
- having multiple mobile phones and worrying about losing contact via mobile
- having unaffordable new things (clothes, mobile) or expensive habits (alcohol, drugs)
- changes in the way they dress
- going to hotels or other unusual locations to meet friends
- seen at known places of concern
- moving around the country, appearing in new towns or cities, not knowing where they are
- getting in/out of different cars driven by unknown adults
- unknown adults collecting the children from school
- having older boyfriends or girlfriends
- involved in abusive relationships, intimidated and fearful of certain people or situations
- hanging out with groups of older people, or anti-social groups, or with other vulnerable peers
- associating with other young people involved in sexual exploitation
- recruiting other young people to exploitative situations
- truancy, exclusion, disengagement with school, opting out of education altogether
- repeat absences / truancy from school (e.g. same time of day, same day each week, etc.)
- unexplained changes in behaviour or personality (chaotic, aggressive, sexual)
- mood swings, volatile behaviour, emotional distress
- self-harming, suicidal thoughts, suicide attempts, overdosing, eating disorders
- drug or alcohol misuse
- frequent missing from home episodes
- getting involved in crime, police involvement, police records
- involved in gangs, gang fights, gang membership
- injuries from physical assault, physical restraint, sexual assault

SEXTING / YOUTH PRODUCED SEXUAL IMAGERY (part of Sexual Abuse)

Whilst professionals refer to the issue as “sexting” there is no clear definition of “sexting”. Many professionals consider sexting to be “sending or posting sexually suggestive images, including nude or semi-nude photographs, via mobiles or over the Internet” yet when young people are asked “What does sexting mean to you?” they are more likely to interpret sexting as “writing and sharing explicit messages with people they know”. Similarly, many parents think of sexting as flirty or sexual text messages rather than images. “Youth produced sexual imagery” best describes the practice because:

- “Youth produced” includes young people sharing images that they, or another young person, have created of themselves
- “Sexual” is clearer than “indecent”. A judgement of whether something is ‘decent’ is both a value judgement and dependent on context
- “Imagery” covers both still photos and moving videos

Creating and sharing sexual photos and videos of under-18s is illegal and therefore causes the greatest complexity for schools and other agencies when responding. It also presents a range of risks which need careful management.

The Law

Making, possessing and distributing any imagery of someone under 18 which is “indecent” is illegal. This includes imagery of yourself if you are under 18. Specifically:

**Aspiring Foundations Federated Nursery Schools
SAFEGUARDING AND CHILD PROTECTION POLICY 2017-18**

- It is an offence to possess, distribute, show and make indecent images of children.
- The Sexual Offences Act 2003 (England and Wales) defines a child, for the purposes of indecent images, as anyone under the age of 18.

The types of incidents which this covers are:

- A person under the age of 18 creates and shares sexual imagery of themselves with a peer under the age of 18
- A person under the age of 18 shares sexual imagery created by another person under the age of 18 with a peer under the age of 18 or an adult
- A person under the age of 18 is in possession of sexual imagery created by another person under the age of 18

This does not cover:

- The sharing of sexual imagery of people under 18 by adults as this constitutes child sexual abuse and schools should always inform the police
- Young people under the age of 18 sharing adult pornography or exchanging sexual texts which don't contain imagery

This does mean that young people are breaking the law by sharing such images, however whilst young people creating and sharing sexual imagery can be very risky, it is often the result of young people's natural curiosity about sex and their exploration of relationships. Often, young people need education, support or safeguarding, not criminalisation.

Whilst it is recognised that the production of such imagery is likely to take place outside of school, issues often manifest in school. As a result it is expected that:

- All members of staff should be able to recognise and refer any disclosures of incidents of this nature
- All incidents of youth produced sexual imagery should be dealt with as safeguarding concerns and school safeguarding procedures should be followed
- Adults should not view youth produced sexual imagery unless there is good and clear reason to do so

If staff have any concerns re: sexting or any disclosures are made, they should *always* follow the school's safeguarding procedures and refer to the SDP / DDP. They should *never* view any images themselves.

The decision to view imagery should be based on the professional judgement of the SDP and should always comply with the child protection policy and procedures of the school or college. Imagery should never be viewed if the act of viewing will cause significant distress or harm to the pupil. If a decision is made to view imagery the SDP would need to be satisfied that viewing:

- is the only way to make a decision about whether to involve other agencies (i.e. it is not possible to establish the facts from the young people involved)
- is necessary to report the image to a website, app or suitable reporting agency to have it taken down, or to support the young person or parent in making a report
- is unavoidable because a pupil has presented an image directly to a staff member or the imagery has been found on a school device or network

If it is necessary to view the imagery then the SDP should:

**Aspiring Foundations Federated Nursery Schools
SAFEGUARDING AND CHILD PROTECTION POLICY 2017-18**

- Never copy, print or share the imagery; this is illegal
- Discuss the decision with the Head teacher
- Ensure viewing is undertaken by the SDP or another member of the safeguarding team with delegated authority from the Head teacher
- Ensure viewing takes place with another member of staff present in the room, ideally the Head teacher or a member of the senior leadership team. This staff member does not need to view the images
- Wherever possible ensure viewing takes place on school or college premises, ideally in the Head teacher or a member of the senior leadership team's office
- Ensure wherever possible that images are viewed by a staff member of the same sex as the young person in the imagery
- Record the viewing of the imagery in the school's safeguarding records including who was present, why the image was viewed and any subsequent actions. Ensure this is signed and dated and meets the wider standards set out by Ofsted for recording safeguarding incidents

RECOGNISING FORCED MARRIAGE AND HONOUR BASED ABUSE

Forced Marriage (FM)

A Forced Marriage is where one or both people do not (or in cases of people with learning disabilities, cannot) consent to the marriage and pressure or abuse is used. It is an appalling and indefensible practice and is recognised in the UK as a form of violence against women and men, domestic/child abuse and a serious abuse of human rights.

Forced Marriage is an entirely separate issue from arranged marriage. It is a human rights abuse and falls within the Crown Prosecution Service definition of domestic violence. Young men and women can be at risk in affected ethnic groups. Whistle-blowing may come from younger siblings. Other indicators may be detected by changes in adolescent behaviours.

The pressure put on people to marry against their will can be physical (including threats, actual physical violence and sexual violence) or emotional and psychological, for example, when someone is made to feel like they're bringing shame on their family. Financial abuse (taking the person's wages or not giving them any money) can also be a factor.

Often those about to be forced into marriage can't talk about what's happening to them because of the emotional pressure they are under from family. If there are suspicions regarding Forced Marriage following talking to the child, it is essential that school takes action without delay. (In cases of forced marriage, involving the family and the community may increase the risk of significant harm to the child or young person. The family may deny that the child or young person is being forced to marry and they may expedite any travel arrangements and bring forward the marriage.) If there are concerns that a child is at risk of FM school should contact the Forced Marriage Unit helpline for advice on 0207 008 0151.

Honour Based Abuse (HBA)

Honour based abuse is a violent crime or incident which may have been committed to protect or defend the honour of the family or community. The terms "honour crime" or "honour-based abuse" or "izzat" embrace a variety of crimes of violence (mainly but not exclusively against women), including assault, imprisonment and murder where the person is being punished by their family or their community. They are being punished for actually, or allegedly, undermining what the family or community believes to be the correct code of behaviour.

Aspiring Foundations Federated Nursery Schools SAFEGUARDING AND CHILD PROTECTION POLICY 2017-18

It is often linked to family members or acquaintances who mistakenly believe someone has brought shame to their family or community by doing something that is not in keeping with the traditional beliefs of their culture. For example, honour based violence might be committed against people who:

- become involved with a boyfriend or girlfriend from a different culture or religion
- want to get out of an arranged marriage
- want to get out of a forced marriage
- wear clothes or take part in activities that might not be considered traditional within a particular culture

In disobeying this correct code of behaviour, the person shows that they have not been properly controlled to conform by their family and this is to the “shame” or “dishonour” of the family. It can be distinguished from other forms of abuse, as it is often committed with some degree of approval and/or collusion from family and/ community members. Victims will have multiple perpetrators not only in the UK; HBA can be a trigger for a Forced Marriage.

INDICATORS OF FM OR HBA

- Absence and persistent absence
- Request for extended leave of absence and failure to return from visits to country of origin
- Fear about forthcoming school holidays
- Surveillance by siblings or cousins at school
- Decline in behaviour, engagement, performance or punctuality
- Poor exam results
- Being withdrawn from school by those with parental responsibility
- Not allowed to attend extra-curricular activities
- Sudden announcement of engagement to a stranger
- Prevented from going on to further / higher education
- Accompanied to doctors or clinics by family members
- Self-harm / attempted suicide / depression / isolation
- Running away from home
- Eating disorders
- Substance misuse
- Siblings forced to marry / early marriage of siblings
- Self-harm or suicide of siblings
- Death of a parent
- Family disputes

If there are suspicions regarding Forced Marriage or Honour Based Violence following talking to the child, it is essential that school takes action **without delay**. In cases of Forced Marriage and Honour Based Abuse, involving the family and the community may increase the risk of significant harm to the child or young person. If there are concerns that a child is at risk of FM school should contact the Forced Marriage Unit helpline for advice on 0207 008 0151 or in either case contact 999 if the situation is deemed to be an emergency.

RECOGNISING FEMALE GENITAL MUTILATION (FGM)

Female Genital Mutilation (FGM) involves procedures that include the partial or total removal of the external female genital organs for cultural or other non-therapeutic reasons. The practice is medically unnecessary,

**Aspiring Foundations Federated Nursery Schools
SAFEGUARDING AND CHILD PROTECTION POLICY 2017-18**

extremely painful and has serious health consequences, both at the time when the mutilation is carried out and in later life.

In England, Wales and Northern Ireland, the practice is illegal under the Female Genital Mutilation Act 2003.

It is essential that staff are aware of FGM practices and the need to look for signs, symptoms and other indicators of FGM. FGM involves procedures that intentionally alter/injure the female genital organs for non-medical reasons. FGM is internationally recognised as a violation of human rights of girls and women. There are 4 types of procedure:

- Type 1, Clitoridectomy - partial/total removal of clitoris
- Type 2, Excision - partial/total removal of clitoris and labia minora
- Type 3, Infibulation - entrance to vagina is narrowed by repositioning the inner/outer labia
- Type 4, all other procedures that may include: pricking, piercing, incising, cauterising and scraping the genital area.

It is carried out because there is a belief that:

- FGM brings status/respect to the girl – social acceptance for marriage
- It preserves a girl's virginity
- Part of being a woman / rite of passage
- Upholds family honour
- Cleanses and purifies the girl
- Gives a sense of belonging to the community
- Fulfils a religious requirement / perpetuates a custom or tradition
- Helps girls be clean / hygienic
- Is cosmetically desirable
- It is mistakenly believed to make child birth easier

Indicators that may point to FGM happening:

- Child talking about getting ready for a special ceremony
- Family taking a long trip abroad
- Child's family being from one of the "at risk" communities for FGM (Kenya, Somalia, Sudan, Sierra Leone, Egypt, Nigeria, Eritrea as well as non-African communities including Yemeni, Afghani, Kurdistan, Indonesian and Pakistani)
- Knowledge that the child's sibling has undergone FGM
- Child talks about going abroad to be "cut" or to prepare for marriage

Signs that may indicate a child has undergone FGM:

- Prolonged absence from school and other activities
- Behaviour change on return from a holiday abroad, such as being withdrawn and appearing subdued
- Bladder or menstrual problems
- Finding it difficult to stand, sit or walk. Looking uncomfortable when undertaking these activities
- Complaining about pain between the legs
- Mentioning something somebody did to them that they are not allowed to talk about
- Secretive behaviour, including isolating themselves from the group

**Aspiring Foundations Federated Nursery Schools
SAFEGUARDING AND CHILD PROTECTION POLICY 2017-18**

- Reluctance to take part in physical activity
- Repeated urinal tract infections
- Disclosure

Mandatory Reporting of FGM

Teachers *must* personally report to the police cases where they discover that an act of FGM appears to have been carried out. Unless the teacher has a good reason not to, they should also still consider and discuss any such case with the school or college's designated safeguarding lead and involve children's social care as appropriate. The duty does not apply in relation to at risk or suspected cases (i.e. where the teacher does not discover that an act of FGM appears to have been carried out, either through disclosure by the victim or visual evidence) or in cases where the woman is 18 or over. In these cases, teachers should follow local safeguarding procedures.

If there are suspicions regarding FGM, it is essential that schools take action **without delay**. If there are concerns that a child is at risk of, or is a victim of, FGM contact the NSPCC FGM helpline anonymously 24/7 on 0800 028 3550 or fgmhelp@nspcc.org.uk

PEER ON PEER ABUSE

Peer on peer abuse is behaviour by an individual or group, intending to physically, sexually or emotionally hurt others. All staff should be aware of safeguarding issues from peer abuse including:

- Bullying (physical, name calling, homophobic, etc., including cyber bullying)
- Gender based violence
- Sexually harmful behaviour and sexting

This abuse can be motivated by perceived differences e.g. on grounds of race, religion, gender, culture, sexual identity, disability, special educational needs or other differences and can result in significant, long lasting and traumatic isolation, intimidation or violence to the victim.

Recognising and responding to peer abuse

Stopping violence and ensuring immediate physical safety is the first priority of any education setting, but emotional bullying can often be more damaging than physical. An assessment of an incident between peers should be completed and should consider the following:

- Chronological and developmental ages of everyone involved
- Difference in their power or authority in relation to age, race, gender, physical, emotional or intellectual vulnerability
- All alleged physical and verbal aspects of the behaviour and incident
- Whether the behaviour involved inappropriate sexual knowledge or motivation
- What was the degree of physical aggression, intimidation, threatening behaviour or bribery
- The effect on the victim
- Any attempts to ensure the behaviour and incident is kept a secret
- The child or young person's motivation or reason for the behaviour, if they admit that it occurred
- Whether this was a one-off incident, or longer in duration

Children or young people who harm others may have additional or complex needs e.g.:

**Aspiring Foundations Federated Nursery Schools
SAFEGUARDING AND CHILD PROTECTION POLICY 2017-18**

- Significant disruption in their own lives
- Exposure to domestic abuse or witnessing or suffering abuse
- Educational under-achievement
- Involved in crime

It is important to develop appropriate strategies in order to prevent the issue of peer-on-peer abuse rather than manage the issues in a reactive way. Even with the most stringent of policies and support mechanisms, peer abuse can and may still occur. In order to try to prevent this *Aspiring Foundations Federated Nursery Schools* will:

- Have an ethos where students and staff treat each other with respect and understand how their actions affect others
- Ensure that the school environment is one that allows students to share information about anything that is upsetting or worrying them
- Use a strong and positive PSHCE curriculum to tackle issues such as prejudiced behaviour, and gives an open forum for young people to talk
- Openly discuss any issues that could motivate bullying with staff and students
- Address issues early between pupils which might later provoke conflict
- Develop strategies to help to prevent bullying
- Involve students and parents to ensure they know what to do to prevent and report concerns
- Create an inclusive, safe environment where pupils can openly discuss issues without fear
- Invest in skills to help staff understand the needs of SEND, disabled and lesbian, gay, bisexual and transgender pupils through staff training and CPD to ensure that staff do not dismiss issues
- Work with the wider community and agencies to tackle issues that occur outside the setting

For further information, staff should refer to Warrington Road Nursery School's Behaviour Management Policy

RECOGNISING VULNERABILITIES TO EXTREMISM AND RADICALISATION

Radicalisation refers to the process by which a person comes to support terrorism and forms of extremism leading to terrorism.

Extremism is defined by the Government in the Prevent Strategy as:

“Vocal or active opposition to fundamental British values, including democracy, the rule of law, individual liberty and mutual respect and tolerance of different faiths and beliefs. We also include in our definition of extremism calls for the death of members of our armed forces, whether in this country or overseas”

Extremism is defined by the Crown Prosecution Service as:

“The demonstration of unacceptable behaviour by using any means or medium to express views which:

- *Encourage, justify or glorify terrorist violence in furtherance of particular beliefs;*
- *Seek to provoke others to terrorist acts;*
- *Encourage other serious criminal activity or seek to provoke others to serious criminal acts; or*
- *Foster hatred which might lead to inter-community violence in the UK”*

There is no such thing as a “typical extremist”; those who become involved in extremist actions come from a range of backgrounds and experiences, and most individuals, even those who hold radical views, do not become involved in violent extremist activity.

**Aspiring Foundations Federated Nursery Schools
SAFEGUARDING AND CHILD PROTECTION POLICY 2017-18**

Pupils may become susceptible to radicalisation through a range of social, personal and environmental factors - it is known that violent extremists exploit vulnerabilities in individuals to drive a wedge between them and their families and communities. It is vital that school staff are able to recognise those vulnerabilities.

Indicators of vulnerability include:

- **Identity Crisis** – the student / pupil is distanced from their cultural / religious heritage and experiences discomfort about their place in society;
- **Personal Crisis** – the student / pupil may be experiencing family tensions; a sense of isolation; and low self-esteem; they may have dissociated from their existing friendship group and become involved with a new and different group of friends; they may be searching for answers to questions about identity, faith and belonging;
- **Personal Circumstances** – migration; local community tensions; and events affecting the student / pupil's country or region of origin may contribute to a sense of grievance that is triggered by personal experience of racism or discrimination or aspects of Government policy;
- **Unmet Aspirations** – the student / pupil may have perceptions of injustice; a feeling of failure; rejection of civic life;
- **Experiences of Criminality** – which may include involvement with criminal groups, imprisonment, and poor resettlement / reintegration;
- **Special Educational Need** – students / pupils may experience difficulties with social interaction, empathy with others, understanding the consequences of their actions and awareness of the motivations of others.

This list however is not exhaustive, nor does it mean that all young people experiencing the above are at risk of radicalisation for the purposes of violent extremism. More critical risk factors could include:

- Being in contact with extremist recruiters;
- Accessing violent extremist websites, especially those with a social networking element;
- Possessing or accessing violent extremist literature;
- Using extremist narratives and a global ideology to explain personal disadvantage;
- Justifying the use of violence to solve societal issues;
- Joining or seeking to join extremist organisations; and
- Significant changes to appearance and / or behaviour;
- Experiencing a high level of social isolation resulting in issues of identity crisis and / or personal crisis.

If there are suspicions regarding radicalisation or extremism, it is essential that schools take action without delay. If there are concerns that a child is at risk of radicalisation, or is voicing concerning opinions or attitudes, staff should contact the school lead (SPOC) for Prevent without delay. The school lead will then risk assess the information and make contact with and take advice from the appropriate agencies.

PREVENTING VIOLENT EXTREMISM - ROLES AND RESPONSIBILITIES OF ASPIRING FOUNDATIONS FEDERATED NURSERY SCHOOLS SINGLE POINT OF CONTACT (SPOC)

- Ensuring that school staff are aware of the role of the SPOC in relation to protecting pupils from radicalisation and involvement in terrorism;
- Maintaining and applying a good understanding of the relevant guidance in relation to preventing pupils from becoming involved in terrorism, and protecting them from radicalisation by those who support terrorism or forms of extremism which lead to terrorism;
- Raising awareness about the role and responsibilities of *Aspiring Foundations Federated Nursery Schools* in relation to protecting pupils from radicalisation and involvement in terrorism;

**Aspiring Foundations Federated Nursery Schools
SAFEGUARDING AND CHILD PROTECTION POLICY 2017-18**

- Monitoring the effect in practice of the school's RE curriculum and assembly policy to ensure that they are used to promote community cohesion and tolerance of different faiths and beliefs;
- Raising awareness within the school about the safeguarding processes relating to protecting pupils from radicalisation and involvement in terrorism;
- Acting as the first point of contact within the school for case discussions relating to pupils who may be at risk of radicalisation or involved in terrorism;
- Collating relevant information in relation to referrals of vulnerable pupils into the Prevent / Channel* process;
- Attending Channel* meetings as necessary and carrying out any actions as agreed;
- Reporting progress on actions to the Channel* Co-ordinator; and
- Sharing any relevant additional information in a timely manner.

*Channel is a multi-agency approach to provide support to individuals who are at risk of being drawn into terrorist related activity. It is led by the Cheshire Police Counter-Terrorism Unit, and it aims to:

- Establish an effective multi-agency referral and intervention process to identify vulnerable individuals;
- Safeguard individuals who might be vulnerable to being radicalised, so that they are not at risk of being drawn into terrorist-related activity; and
- Provide early intervention to protect and divert people away from the risks they face and reduce vulnerability.

CHILDREN MISSING EDUCATION (CME)

Children Missing Education are children of compulsory school age who are not registered pupils at a school and are not receiving suitable education otherwise than at a school. Children missing education are at significant risk of underachieving, being victims of harm, exploitation or radicalisation, and becoming NEET (not in education, employment or training) later in life. Effective information sharing between parents, schools and local authorities is critical to ensuring that all children of compulsory school age are safe and receiving suitable education. Maintained schools have a safeguarding duty in respect of their pupils, and as part of this should investigate any unexplained absences. Academies and independent schools have a similar safeguarding duty for their pupils. When a child is deemed to be missing from education, Schools must make reasonable enquiries to establish the whereabouts of the child jointly with the local authority, before deleting the pupil's name from the register. Once these enquiries have been undertaken, the local protocol for Children Missing Education must be followed.

Pupils at particular risk of CME:

- **Pupils at risk of harm/neglect**
Children may be missing from education because they are suffering from abuse or neglect. Where this is suspected school should follow the local child protection procedures
- **Children of Gypsy, Roma and Traveller (GRT) families**
Research has shown that many children from these families can become disengaged from education, particularly during the secondary school phase. It is therefore important that schools inform the local authority when a GRT pupil leaves the school without identifying a new destination school, particularly in the transition from primary to secondary so that they can attempt to facilitate continuity of the child's education
- **Children of Service Personnel**
Families of members of the Armed Forces are likely to move frequently – both in the UK and overseas and often at short notice
- **Missing children and runaways**

**Aspiring Foundations Federated Nursery Schools
SAFEGUARDING AND CHILD PROTECTION POLICY 2017-18**

Children who go missing or run away from home or care may be in serious danger and are vulnerable to crime, sexual exploitation or abduction as well as missing education

- **Children and young people supervised by the Youth Justice System**

Children who have offended or are at risk of doing so are also at risk of disengaging from education

- **Children who cease to attend a school**

There are many reasons why a child stops attending a school. It could be because the parent chooses to home educate their child. However, where the reason for a child who has stopped attending a school is not known, the local authority should investigate the case and satisfy itself that the child is receiving suitable education.

- **Children of new migrant families**

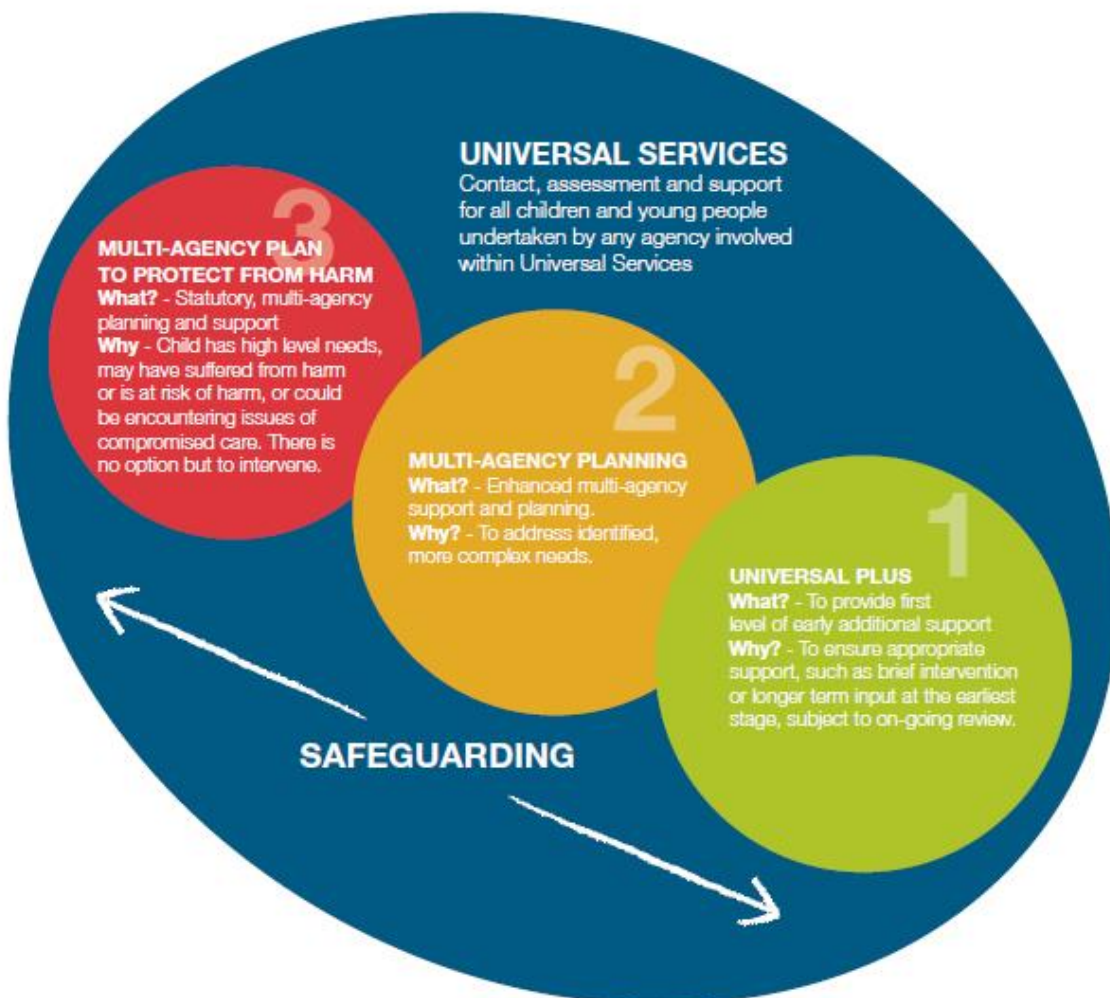
Children of new migrant families may not have yet settled into a fixed address or may have arrived into a local authority area without the authority becoming aware, therefore increasing the risk of the child missing education

Appendix 4

HALTON LEVELS OF NEED FRAMEWORK

Halton Levels of Need Framework

The Halton Levels of Need Framework aims to support agencies to meet the needs of children, young people and their families to ensure the best possible outcomes. It aims to assist practitioners and managers in assessing and identifying a child's level of additional needs and how best to respond in order to meet those needs as early as possible to prevent needs escalating further.



For more information please contact
 Mark Grady – Principal Policy Officer, Children & Enterprise
 0151 511 7396 or mark.grady@halton.gov.uk



Appendix 5
REFERRAL FLOWCHART

